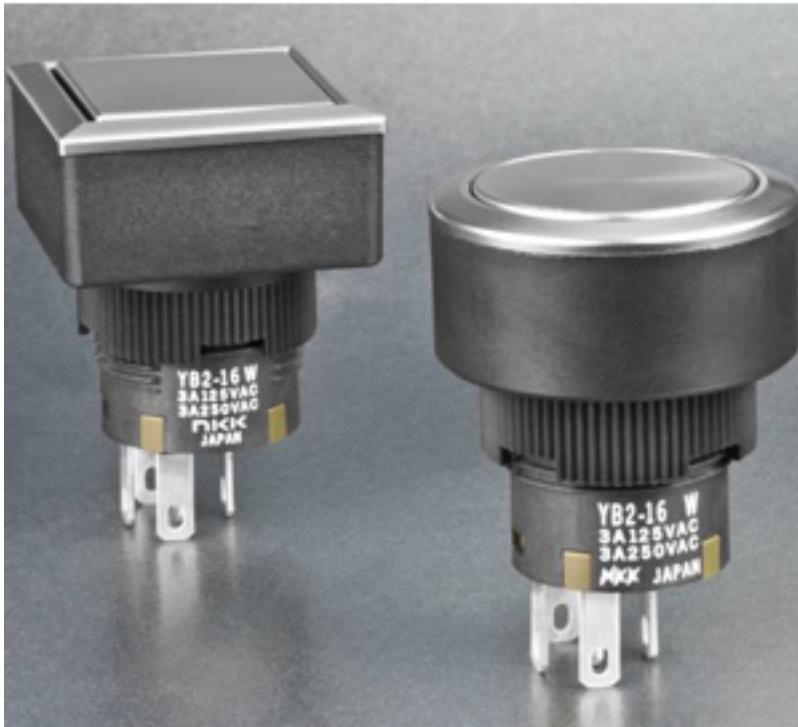


## IP65-rated pushbuttons include new brushed chrome option



[NKK Switches](#) [1] announced it has updated its [YB2 Series](#) [2] of 24mm square and 25mm round tamperproof pushbuttons. New to the series is a brushed chrome cap and bezel option for non-illuminated models. This new option gives design engineers greater flexibility to match YB2 Series devices with the style of their designs.

Replacing the silver option for the YB2 Series, the new brushed chrome alternative provides the look of a stainless steel switch without the added weight. This is made possible through high quality metal plating on top of a sturdy resin foundation.

In addition to the brushed chrome cap color option, engineers can alternatively choose clear, red, green or amber caps for non-illuminated models as well as a black bezel. Illuminated models feature bright or superbright LEDs available in blue, white, red, green or amber, with matching color caps and built in ballast resistors. Custom legends on the caps are available for both non-illuminated and illuminated models.

When selecting the brushed chrome cap option, outer ring illumination is also available in all the bright and superbright LED colors offered in the YB2 Series product line. The outer ring illumination is diffused through a clear outer ring, framing the center in a halo of light.

Available in SPDT and DPDT momentary and maintained action, all YB2 Series

## **IP65-rated pushbuttons include new brushed chrome option**

Published on Electronic Component News (<http://www.ecnmag.com>)

---

devices feature crisp actuation provided by the snap-action contact mechanism. This ensures clear circuit status and is supplemented with a latch-down actuator for maintained models.

Featuring an IP65 rating, YB2 switches utilize terminals that are a combination of solder lug and .110" quick connect. The epoxy seal locks out flux, dust, solvents and other contaminants, as well as securing the terminals for contact stability. These devices are cULus recognized when ordered with /CUL marking on the switch.

Design engineers can also choose either power rated or logic level options. Ratings are 3A@125V AC, 3A@250V AC or 3A@30V DC for power models, and 0.4VA@28V AC/DC maximum for logic level versions.

The YB2 Series has a flammability rating of UL94V0. Mechanical life is rated at 1,000,000 operations minimum for momentary circuits and 200,000 operations minimum for maintained circuits. Electrical life is rated at 100,000 operations minimum.

[www.nkkswitches.com](http://www.nkkswitches.com) [3]

### **Source URL (retrieved on 04/21/2014 - 7:09am):**

<http://www.ecnmag.com/product-releases/2013/04/ip65-rated-pushbuttons-include-new-brushed-chrome-option>

### **Links:**

[1] <http://www.nkk.com/>

[2] <http://www.nkkswitches.com/series.aspx?stid=3&id=5086>

[3] <http://www.nkkswitches.com>