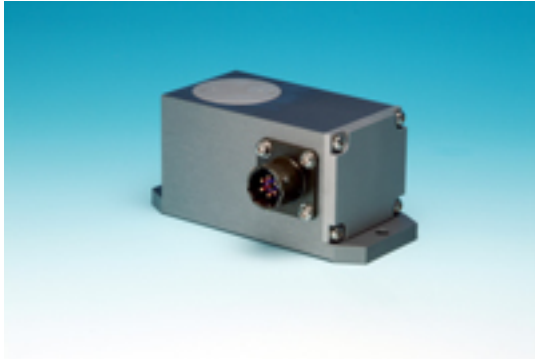


Linear Servo Accelerometers Tout 4-20 mA Output



Sherborne Sensors has announced the debut of its A323 'L' Series, a range of rugged, ultra-low range gravity referenced linear servo accelerometers with 4-20 mA (closed loop) output, designed for use within low acceleration analysis, structural health monitoring, flight test, and civil engineering applications. The series offers high-precision measurements over a range of ± 0.1 g to ± 2.0 g, with frequency response down to DC. The gravity referenced, closed loop sensors are designed to reliably monitor acceleration down to 20 micro g, yet rugged enough to withstand up to 1500 g of mechanical shock. Sensors are housed in a rugged, anodized light alloy case with IP65 environmental sealing, and can be specified with six-pin Bayonet lock or solder pin connector. An optional 1 g bias is also available. Units are fully self-contained and able to be connected to a DC power source and readout or control device to form a complete measurement system.

Sherborne Sensors

877-486-1766, www.sherbornesensors.com [1]

Source URL (retrieved on 03/06/2015 - 9:02pm):

http://www.ecnmag.com/product-releases/2010/05/linear-servo-accelerometers-tout-4-20-ma-output?qt-most_popular=0

Links:

[1] <http://www.sherbornesensors.com>